



# PRODUCT CATALOG



**APEX SERIES**

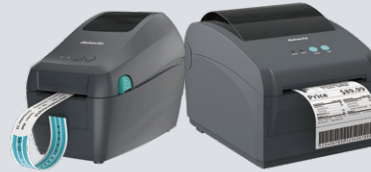


**INTELLIGENT SERIES**



**RECEIPT PRINTER SERIES**

**SURPASS SERIES**



**ELITE SERIES**

**MOBILITY PRINTER SERIES**



# HARDWARE PRODUCTS LINEUP

Gainscha offers a wide range of printer series for customers, including the Apex Series, Intelligent Series, Surpass Series, and Elite Series. Each series is designed to meet specific needs and offer cutting-edge technology to enhance your printing experience.

**Hi, I'm Haha**

I' m a member of the Gainscha family.



# 1 DESKTOP BARCODE PRINTER



## GA-2408TE

4 INCH DESKTOP RFID BARCODE PRINTER

Support to read, write and print on UHF RFID labels. 203dpi and 300dpi print resolution for choice. Thermal transfer and thermal print technology, work with various print media to maximize your investment.

Print Resolution	Max. Print Width	Max. Print Speed	Connectivity
203 dpi	4.1"	203 mm (8")/sec	USB 2.0, Bluetooth(optional), Wi-Fi(optional)



## GA-2408T

### 4 INCH DESKTOP TT BARCODE PRINTER

The powerful desktop printer among same category, direct thermal and thermal transfer, allowing seamless transfer to meet different needs. They are commonly used in industries such as manufacturing, retail, healthcare and logistics where barcodes are used to track products and inventory.

Print Resolution	Max. Print Width	Max. Print Speed	Connectivity
203 dpi	4.1"	203 mm (8")/sec	USB 2.0, USB Host 2.0, RS-232, Ethernet, Bluetooth(optional), Wi-Fi(optional)

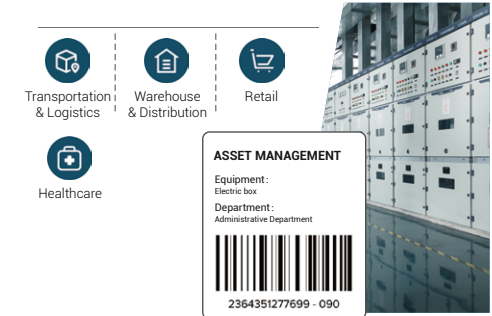


## GS-2406T PLUS

### 4 INCH DESKTOP TT BARCODE PRINTER

Clamshell double-wall sturdy structure, quality reliable. It can automatically switch between thermal and thermal transfer printing modes for convenient operation. Cutter can be added to meet your printing needs of various labels, wristbands and washable labels.

Print Resolution	Max. Print Width	Max. Print Speed	Connectivity
203 dpi	4.1"	152 mm (6")/sec	USB 2.0, USB Host 2.0, RS-232(optional), Ethernet(optional), Bluetooth 4.0(optional), Wi-Fi(optional)



## GS-2406T

### 4 INCH DESKTOP TT BARCODE PRINTER

Classic Surpass series barcode printer, easy to install print media, along with Bartender label editing software, feature-rich, stable and reliable, widely used in production and processing, sorting center, retail store, warehouse management, medical, financial, government label printing.

Print Resolution	Max. Print Width	Max. Print Speed	Connectivity
203 dpi	4.1"	152 mm (6")/sec	USB 2.0, USB Host 2.0, RS-232, Ethernet (optional), Bluetooth 4.0 (optional), Wi-Fi(optional)







## GS-2208D

### 2 INCH DESKTOP DT LABEL PRINTER

2-inch thermal label and wristband printer, no need ribbon, great to work with medical, entertainment and pets wristbands. For beverage, sweet, bakery and food store, it can print 20mm~60mm width thermal labels.

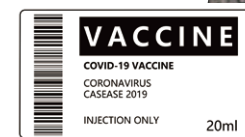
Print Resolution	Max. Print Width	Max. Print Speed	Connectivity
203 dpi	2.13"	203 mm (8")/sec	USB 2.0, USB Host 2.0, Ethernet, Bluetooth 4.0(optional), Wi-Fi(optional)



Wristband



Warehouse  
& Distribution



## GS-2408D

### 4 INCH DESKTOP DT LABEL PRINTER

4-inch fast-speed thermal label printer, work with 20mm ~ 120mm width roll/fan-fold labels. Available with Ethernet, USB Host, Bluetooth and Wi-Fi ports. Good for printing warehouse shipping label, shelf label, and wide-format labels for food stores such as sushi.

Print Resolution	Max. Print Width	Max. Print Speed	Connectivity
203 dpi	4.1"	203 mm (8")/sec	USB 2.0, USB Host 2.0, Ethernet(optional), Bluetooth 4.0(optional), Wi-Fi(optional)



Transportation  
& Logistics



Warehouse  
& Distribution



Retail



Healthcare



## GE-2408D

### 4 INCH DESKTOP DT LABEL PRINTER

New Elite series barcode printer, compact footprint, classic industrial gray color, good quality structure, create for retail, medical, postal industry with great value. Ideal low-volume label printing application.

Print Resolution	Max. Print Width	Max. Print Speed	Connectivity
203 dpi	4.1"	203 mm (8")/sec	USB 2.0, Bluetooth(optional), Wi-Fi(optional)



Transportation  
& Logistics



Warehouse  
& Distribution



Retail



Healthcare



# 2 INDUSTRIAL BARCODE PRINTER

Strong performance for high volume label print

- Industrial-grade design, rugged construction, high continuous printing volume
- Easy to load ribbon, larger capacity inner compartment can hold 450 meters of ribbon and 8-inch labels
- Free BarTender label editing software for download, flexible matching various print media
- Easy to integrate, compatible with various printing software, out of the box
- Auto cutter and Peeler as choice





## GI-2408T Intelligent Series Industrial Printer

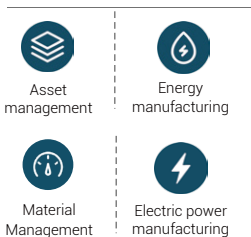
4-inch industrial printer, work with 450m ribbon and industrial-grade larger print media. Compatible with various printing languages and software for easy system integration. Equipped with high-quality touch screen, bringing users a smart, intuitive and convenient operation experience.

**Print Resolution**  
203 dpi

**Max. Print Width**  
4.09"

**Max. Print Speed**  
203 mm (8")/sec

**Connectivity**  
USB 2.0, USB Host 2.0, RS-232, Ethernet,  
Bluetooth 4.0(optional), Wi-Fi(optional)



## GI-2408T PLUS Intelligent Series Industrial Printer

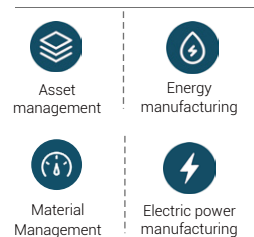
New GI-2408T PLUS is the most powerful barcode printer in Gainscha industrial printer line, durable construction, more extra features, for high-volume barcode printing in mission-critical applications, supported by 128MB SDRAM and 128MB Flash memory.

**Print Resolution**  
203 dpi

**Max. Print Width**  
4.09"

**Max. Print Speed**  
203 mm (8")/sec

**Connectivity**  
USB 2.0, USB Host 2.0, RS-232,  
Ethernet, Bluetooth 4.0(optional),  
Wi-Fi(optional), I/O port(optional)





# TECHNICAL SUPPORT



Label Designer



**Bartender**

- Industry leading software
- Free edition

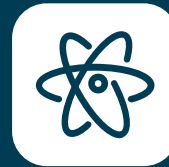


Printer Driver



**Driver & SDK**

- Windows Driver
- Linux Driver
- Android SDK
- iOS SDK



Test & Operate



**Technical Support**

- Windows Utility
- Android Utility
- User manual
- Quick guide
- Operation video
- FAE support



Printer Upgrade



**Upgrade Utility**

- Remote upgrade
- Firmware maintainable

Email: [sales@gainscha.com](mailto:sales@gainscha.com) Tel: +86 7563965735

Website: [www.gainscha-aidc.com](http://www.gainscha-aidc.com) [www.gainscha.com.tw](http://www.gainscha.com.tw)

Address: Workshop No. 1, No. 15 pingbei 2nd Road, Xiangzhou District, Zhuhai, Guangdong, China, 519060