

OVER 20 YEARS OF EXPERIENCE



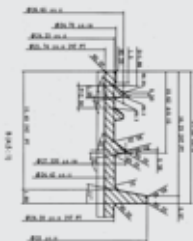
TOTAL  
TURNKEY  
PACKAGING  
SOLUTION  
PROVIDER



# PREFORM FOR WATER/ EDIBLE OIL/ CSD/ JUICE/ MEDICINE AND VINEGAR

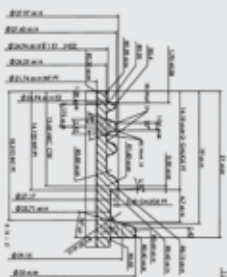


## 27mm - Alaska



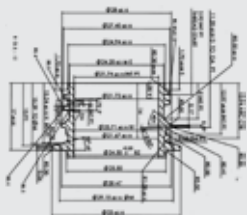
Weight (g)	Body Height (mm)	No of pcs in a 20' Cont.	No of pcs in a 40' Cont.
9.4	52.8	432,000	1,008,000
12.4	63.4	432,000	1,008,000
19	92	288,000	672,000
28.2	102	216,000	504,000
30	105.03	324,000	756,000

## 28mm - PCO1810



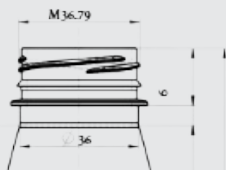
Weight (g)	Body Height (mm)	No of pcs in a 20' Cont.	No of pcs in a 40' Cont.
14.5	57	396,000	924,000
17	64	576,000	1,344,000
24	89	288,000	672,000
24.5	86.76	288,000	672,000
27	89	288,000	672,000
27.5	86.8	288,000	672,000
34	109	324,000	756,000
35	105.03	324,000	756,000

## 28mm - PCO1881



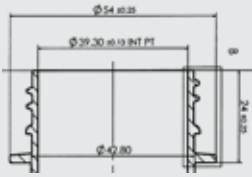
Weight (g)	Body Height (mm)	No of pcs in a 20' Cont.	No of pcs in a 40' Cont.
18.5	64	396,000	924,000
24	80	504,000	1,176,000

## 38mm - 3 Start



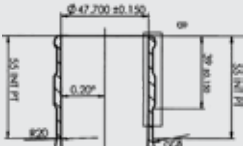
Weight (g)	Body Height (mm)	No of pcs in a 20' Cont.	No of pcs in a 40' Cont.
15	60	252,000	588,000

## 45mm - 2 Start



Weight (g)	Body Height (mm)	No of pcs in a 20' Cont.	No of pcs in a 40' Cont.
80	155.5	64,800	151,200
90	150.01	64,800	151,200

## 55mm - 5 Gallon Water

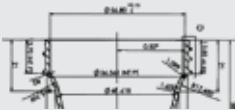


Weight (g)	Body Height (mm)	No of pcs in a 20' Cont.	No of pcs in a 40' Cont.
357	256.2	39,600	92,400
725	325	10,800	25,200
730	325	10,800	25,200

## WIDE MOUTH PREFORM FOR JAR

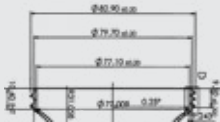


### 63mm - Normal Neck



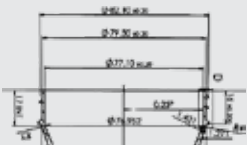
Weight (g)	Body Height (mm)	No of pcs in a 20' Cont.	No of pcs in a 40' Cont.
24.5	59.15	307,800	718,200

### 83mm - Short Neck



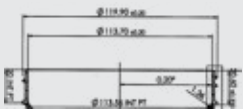
Weight (g)	Body Height (mm)	No of pcs in a 20' Cont.	No of pcs in a 40' Cont.
29	51	262,080	611,520
40	76	221,760	517,440

### 83mm - Normal Neck WM



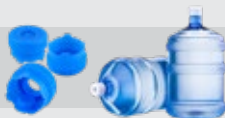
Weight (g)	Body Height (mm)	No of pcs in a 20' Cont.	No of pcs in a 40' Cont.
32	50.1	171,360	399,840
44	76	141,120	329,280
51	69.44	141,120	329,280
65	97.7	100,800	235,200
75	97.7	100,800	235,200

### 120mm - Normal Neck



Weight (g)	Body Height (mm)	No of pcs in a 20' Cont.	No of pcs in a 40' Cont.
72	117.4	61,200	142,800
108	117.4	43,200	100,800
125	117.4	43,200	100,800

## 3 & 5 GALLON BOTTLES WITH CAPS



Item	Weight (g)	No of pcs in a 20' Cont.	No of pcs in a 40' Cont.
3GL Bottle	357g	1375	2750
5GL Bottle	730/725g	1100	2200
5GL Cap with Insert	12.30g	172,800	403,200
5GL Insert Free Cap	10g	180,000	420,000

## HDPE BLOW CANS



1 Liter | 4 Liter Round |  
4 Liter Square | 5 Liter Square

## HDPE BLOW BOTTLES



250ml | 500ml | 600ml | 1 Liter

## HDPE CONTAINERS (ICE CREAM & PHARMACEUTICAL)



500ml | 1 Liter | 1.7 Liter | 2 Liter | 4 Liter

## SMALL CAP & CLOSURES



Small Cap & Insert- Cap & Closures in a diverse range of size & colours such as 27mm (Alaska), 28mm (PCO), 38mm, 45mm, 63mm, 83mm, 120mm

Tamper Evident 83mm cap, 5 Gallon Cap & Insert, Can Cap & Insert, 5-7 Liter Cap & Handle

Item	Weight (g)	No of pcs in a 20' Cont.	No of pcs in a 40' Cont.
5L Cap	5.3g	432,000	1008,000
5L Handle	7.5g	270,000	630,000
63mm Cap	6.5g	180,000	420,000
83mm Cap	9.50,11.5,12.5,14.5g	180,000	420,000
83mm S/N Cap	7.20g	252,000	588,000

## PAINT BUCKETS



Special Screen Printed or Heat Transferred Labels-  
1Liter | 4 Liter | 10 Liter | 20 Liter

Paint Buckets - 1 Liter | 4 Liter | 10 Liter | 20 Liter

# CAP SNAP LANKA (PVT) LTD HOMAGAMA

In June 2003, Cap Snap Lanka (Pvt) Ltd was established as a plastic product manufacturing industry with an extensive factory and office covering 35,000 sq ft in the well-developed Zomban Katuwana, Homagama.



# INDUSTRIES



**Water Industry**



**Confectionery Industry**



**Tea Industry**

**Pharmaceutical Industry**



**Paint Industry**



**Juice & Ketchup Industry**



**Vinegar & Oil Industry**



**Milk Industry**



**Detergent Industry**



**CSD Industry**



**Cap Snap Lanka (PVT) Ltd  
American Polymers (PVT) Ltd**

Head Office: 281, Level-6, R.A. De Mel Mawatha,  
Colombo-3, Sri Lanka.

Factory/ Corporate Office  
120, UDA Industrial Zone, Katuwana,  
Homagama, Sri Lanka. Tel. +94 117 663 207

Factory: 44/1, Artigala Road, Padukka.

Email. [sales@capsnap.lk](mailto:sales@capsnap.lk) / [info@capsnap.lk](mailto:info@capsnap.lk)