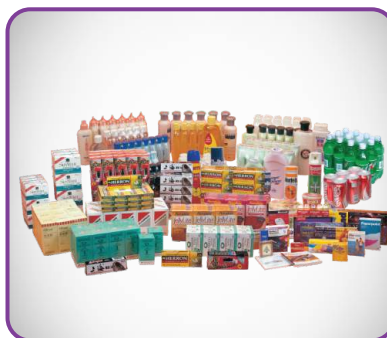


# Automatic Shrink Wrapping Solutions



**Shrink Wrapping  
With POF Film**



**Shrink Bundling  
With LDPE Film**



**Polyolefin  
Films (POF)**

# Contents



- Clearpack Group
- Automatic Shrink Bundler- Packmatic Series
- Pick & Place Solution for Shrink Packaging
- Shrink Wrapper - LHS115
- Automatic L Sealer - EFK250
- Automatic L Sealer - FP6000
- Side Sealer - HS500
- Overlap Shrink Wrapper - XP650
- Shrink Tunnels
- Sealed Air - Polyolefin Shrink Film



This communication introduces 'Shrink Packaging Solutions' in our portfolio. These solutions can be used individually or as a part of a turnkey system. Our systems are characterized by their high efficiency, reliability, ease of maintenance and competitive price.

Browse through the next few pages to find the solution that meets your specific need.

Get in touch with us at [info@clearpack.com](mailto:info@clearpack.com) to find more details.

## Shelf Application Display

Shrink Wrapping plays an extremely important role to offer your brand a presentable look in a highly competitive shelf space in retailing. This presentation makes up for a tamper-evident pack and sparkling, glossy appearance too.

Packs: Stationary, Home Care, Personal Care, CDs, Computer Software, Boxed Games, Gift Packs, Books and Trays of foods/ meats/ fruits/ eggs, etc.

## Cost Effective Packaging

Shrink Packaging helps you to hold a collation of products such as Cartons, Jars, Tins, Bottles etc. together using a strong film or with a cardboard tray, whilst in transit. Apart from protecting the product, this packaging significantly lowers your packing cost when you switch from corrugated cartons. Automatic machines with collation also result in saving on labour & deliver higher efficiency.

Packs: Trays of Jars, Bottles and Canned products, Collations of Magazines, Boxes Cartons, Industrial products, Home & Personal Care products, Food etc.



Clearpack is a leading provider of automatic packaging solutions for Food, Beverage, Home and Personal care, Pharma, Paint, Oil and Chemical Industries. We are a 500+ people strong, stable, and well organised group with proven expertise in filling, end-of-line, and complete line engineering solutions. We are leading the industry with Best in Class Packaging Automation using Robotics, AGV's, Digitalisation including factories of future with advanced technology systems.

With our network of offices, R&D and production facilities and a dedicated team of packaging professionals across South East Asia, India, China, Middle East, Americas and Europe we deliver excellent value to our customers by:

- Manufacturing & sales of Liquid Filling and Capping machines and End of Line Packaging machines in our facilities in India and other locations.
- Providing software solutions for Monitoring and Improving Packaging Line OEE and for Remote Diagnostics.
- Providing Total Services from Concept, Design, Execution to Installation Commissioning and Life Cycle Support.

We owe our success to our esteemed customers and our reliable partners, both inspiring us to deliver “Customer Delight” and not mere satisfaction. It is an endeavour we take very seriously.

## Service and Support

- After sales support is something that differentiates us.
- With Global presence and team of trained service engineers we aim to keep high ‘up-time’ for the machine we supply.
- We provide local language documentation, preventive maintenance visits, AMC's, training to ensure that your machines, are always in good condition and production ready.
- We continually invest in training our service engineers to be able to deliver under tight time constraints.

### Contact us

Service assistance: [customercare@in.clearpack.com](mailto:customercare@in.clearpack.com)

Spares: [spares@in.clearpack.com](mailto:spares@in.clearpack.com)

---

“  
**Our MACHINES deliver SUPERIOR performance.  
Our SERVICES ENSURE they continue to do so**

---





# Automatic Shrink Bundler - Packmatic Series

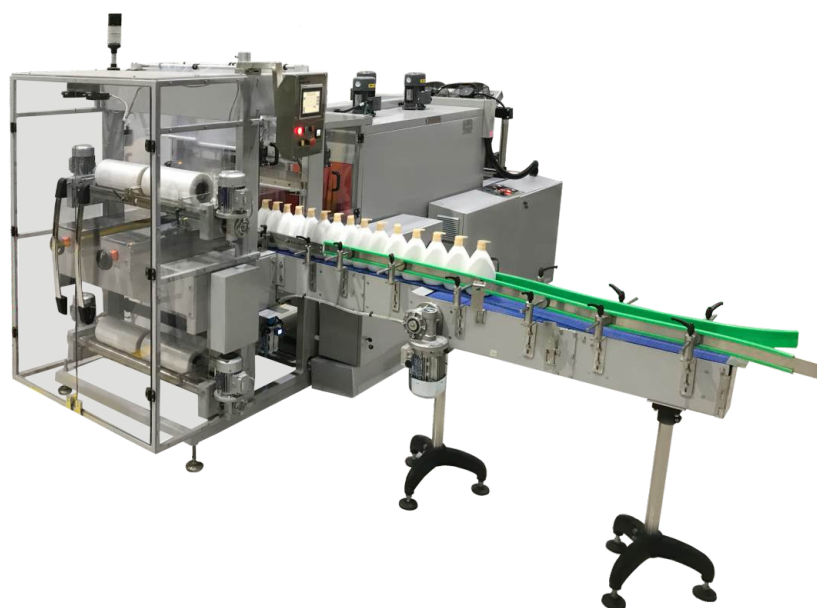


The Packmatic series of semi-automatic and automatic shrinkwrappers with sealing bar are extremely versatile: They can pack various products, such as glass/ PET bottles, cans, boxes, trays, jars, cartons of different sizes in a wide range of pack collations. They can be used in several industry segments, such as beverages, food, pharma, chemicals, wine and spirits, cosmetics, detergents, wood, textile, graphic etc.

The Packmatic series allows us to meet a wide variety of customer's demands and to ensure a very good quality/price ratio.

## Features & Benefits:

- Economical packaging concept  
(Cost of packaging is less)
- Speed up to 600 bpm
- Increase sales with multiple packs
- Durable packing to withstand transport and stocking
- Automatic handling of products
- Savings over manpower cost
- Available in semi- automatic and automatic variants
- Compact footprint, quick changeover and integration with upstream or downstream machines
- Energy efficient shrink tunnels



## Technical Specifications:

MODEL	50 ASW/AVS 25	65 ASW/AVS 35	85 ASW/AVS 45	110 ASW/AVS 45	85 ASWT/AVST 35/45
Sealing width (mm)*	550	700	850	1100	850
Max. film width (mm)	460	610	800	1040	350
Input speed (Bottles/min)	150	250-360	120-240	120-200	120-400
Output speed (Packs/min)**	15-22	06-20	10-20	10-20	25-35

ASW - Automatic Sleeve Wrapper  
ASWT - Automatic Sleeve Wrapper Tandem  
AVS - Automatic Up Stacker Sleeve Wrapper  
AVST - Automatic Up Stacker Sleeve Wrapper Tandem  
\* Subject to maximum film width  
\*\* Depending on product and operator



# Pick & Place Solution for Shrink Packaging



The automatic sleeve wrapper with pick and place system is a machine that is ideal to be adopted in multiple packaging lines of homecare & personal-care industry.

The movement of bottles with curved bottom (tottle) on conveyor is usually tough. To ensure steady transport of unstable bottle, puck system was used from filling line input to end of line.

In order to make bundle, the bottles were to be removed from the pucks without compromising with line speed and placed on shrink packaging machine to be shrink packed.

The system is designed to handle multiple bottles of varied size & design with minimum change parts.



## Features & Benefits:

- Pick-and-place machines are extremely flexible. They are easily programmed to handle whatever dimensions, movements or specifications operators have in mind. Therefore, they accommodate a wide range of components and operations.
- Compact layout with easy access to the work area; maintenance is simple and convenient to carry out.
- The machine structure is made of SS304 for product safety.
- The mechanical movements of the machine's operating cycle are carried out by pneumatic cylinders and servo motors control the gantry motion of pick & place system by the electronic control unit.
- The sequence and amplitude of the movements can be programmed via software that allows a wide range of size parts to be implemented regarding both composition and dimension of products to be handled.
- Other movements are carried out by gear motors or drivers at speeds that can be varied via inverters.
- All the phases in the operating cycle are automatically checked and any failures are displayed on the operator terminal. If necessary, the machine is stopped automatically to allow for checks.



# Shrink Wrapper - LHS115



LHS 115 is a semi-automatic shrink wrapping machine consisting of L sealer and shrink tunnel in a single frame. This machine separates sealing and shrinking cycles for faster operation. The operator first inserts the product in the centre-folded shrink film; sealing is done with L sealer and is followed by shrinking in a compact shrink tunnel. The bottom heated belt inside the tunnel gives excellent finish all around the pack.

## Features & Benefits:

- Automatic control and adjustment of sealing time
- Product counter
- Safe and reliable
- Heavy gauge steel construction with powder coated finish
- Stainless steel product loading tray

## Technical Specifications:

Sealing dimensions	380 W x 500 L mm
Tunnel opening (H)	150 mm
Maximum product dimensions*	330 W x 400 L x 120 H mm
Maximum film width	450 mm



# Automatic L Sealer - EFK 250

EFK Automatic L sealers are used to automatically wrap products in center-folded film. The center-folded film is inverted and opened by inverting triangles at top and bottom of in-feed conveyor that allows the product traveling on the conveyor to move inside the film.

## Features & Benefits:

- Fully automatic pack length recognition by horizontal or vertical sensors
- Fast changeover with easy adjustment for width and height
- Choice of hot knife design for various shrink films
- Staging option for high speed

## Technical Specifications:

MODEL	EFK 250 / EFK 250C	EFK 250AC
Sealing area (W X L)	450 x 560 mm	450 x 560 mm
Product pass through height	125 mm	170 mm
Max product dimensions (W X L)*	350 x 450 mm	350 x 450 mm
Maximum film width (H)	500 mm	500 mm
Sealing platform position	Fixed height	Adjustable with centre seal





# Automatic L Sealer - FP6000



The semi-automatic and automatic “Full Electric” packers with L-sealing system from the FP series are characterized by great quality/price ratio and modularity. All models of this range can indeed be supplied with or without shrink tunnel.

The INOX version of these machines is ideal for meeting the needs of the food, toys, cosmetics, pharmaceutical, electric-electronic, plastic, wood, paper, detergents, mechanical industry, lubricants, cases & boxes, shelving, logistic, co-packers etc industry; it features a stainless steel frame (AISI 304) and is equipped with a conveyor belt in compliance with FDA, UE and USDA regulations for contact with food.

Compared to the traditional L-sealers, the FP series provides higher outputs as well as the possibility of using Polyethylene film, besides the traditional shrink films, and includes different models for outputs ranging up to 3600 packs/hour.

## Features & Benefits:

- FULL ELECTRIC L-sealer
- Motorized sealing bar controlled by inverter and encoder
- Motorized conveyor closing system controlled by inverter included
- PTFE-coated sealing blade
- Emergency button
- Safety device
- Continuous cycle sealing
- FLXMOD® control system equipped with:
  - 4,3" graphic LCD control panel with PLC
  - Modular power section made up by:
    - Inverter for all motors
    - IN/OUT (inlet/outlet) digital and analog control modules
- This system allows a simple and precise control of all the machine operations, such as:
  - Possibility of storing up to 20 different operation programs
  - Automatic control of the sealing bar height
  - Double adjustment of the sealing blade temperature, both lengthways and broadways
  - Sealing time adjustment
  - Possibility of packing single packs or multipacks
  - Speed of conveyor selectronically adjustable from the control panel
- Compliance with CE regulations

## Technical Specifications:

Power supply

220-240/380-415 V  
3PH+PE/3PH+N+PE  
50/60 Hz

Installed power

3350 W

Sealing bar

640 x 510 mm

Maximum pack height\*

150 mm

Speed of conveyors

10 - 30 m/min

Output up to\*\*

3000 pph

Maximum size of film reel

600 - ø 350 mm

Machine size

2180 x 1545 mm

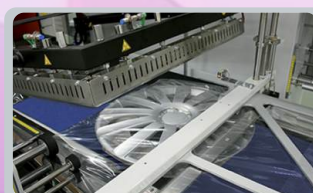
h 1505-1665 mm

Machine net weight

580 Kg

Usable Films: Polyolefin and Polyethylene  
(Polyethylene from 15 to 60 my with option sealing bar for Polyethylene)

up to 30 m µ



\* Subject to maximum film width

\*\* Depending on product and operator

# Side Sealer - HS 500



The “Full Electric” automatic packers with continuous sealing system from the HS series, designed according to the most advanced concepts of Industry 4.0, are characterized by a great quality/price ratio and modularity. In fact, all the models of this range can be supplied with or without shrink tunnel.

The HS series with continuous sealing and intermittent or box motion cycle can handle Polyolefin and Polyethylene, Polypropylene centerfolded or flat film with film folder PX, and is suited to meet outputs of up to 7200 packs/hour and 9000 packs/hour with customized solutions.

## Features & Benefits:

- Continuous FULL ELECTRIC 4.0 packer
- Continuous working cycle (box motion) by cam electronics self-configuring
- Side sealing system by friction with hot blade
- Continuous motion cross sealing bar with PTFE-coated sealing blade controlled by brushless servomotor
- This system is able to check all operations, simply and precisely, such as:
  - Gap of products automatically controlled
  - Electronic checking of the film tension
  - Adjustment of cross bar height
  - Dual sealing temperature adjustment, both for the longitudinal and the cross sealer
  - Sealing time adjustment
  - Possibility of packaging individual packs or groups of products
  - Electronically controlled conveyor belt speed
- Motorized center seal system
- 50 storable programs
- Height adjustment of the longitudinal sealer
- Emergency button
- Compliance with CE regulations

## Technical Specifications:

MODEL	HS500	HS500 Servo
Type	Side Seal	Side Seal
Installed power	2500 W	8500 W
Sealing bar	500 mm	520 mm
Maximum pack height*	200 mm	200 mm
Speed of conveyors	11-45 m/min	5-40 m/min
Average output per hour**	Up to 6000 pph	Up to 7200 pph
Maximum size of film reel	600-ø 350 mm	600-ø 350 mm
Machine size	2180 x 1545 mm H 1505-1665 mm	2725 x 1550 mm H 1505-1665 mm
Machine net weight	730 kg	830 kg
Usable shrink films	Polyolefin film up to 30 m µ	Polyolefin film up to 30 m µ



\* Subject to maximum film width

\*\* Depending on product and operator



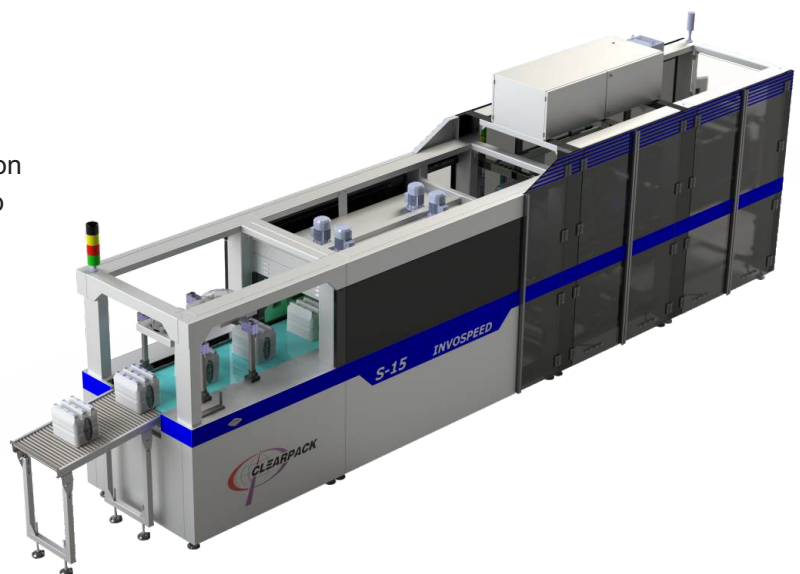
# High Speed Shrink Wrapper - INVOSPEED



The Invospeed is a reliable and intelligent machine, truly in an innovative class of its own. It has an output ranging from 10 to 30 packs per minute. The machine has been designed for zero change parts while the changeover is short and simple for operators. An almost wear free and easily accessible design as well as the worldwide availability of our standard components ensure low maintenance cost.

## Features & Benefits:

- Lane Divider integrating - integrating upstream conveyors and/ or buffers
- Grouping Section - for various pack size
- Automatic Blank Magazine- Optional for tray and wrap-around
- Product Protection - partition or layer - board as option
- Product Spacing and Synchronizing - to create a gap between product group
- Folding Station - Optional for tray and wrap -around
- Shrink Film Applicator - applying the film around the pack in accordance with the overlapping principle
- Shrink Tunnel - overlapping film end are laminated to a tight pack



## Technical Specifications:

MODEL	INVOSPEED S15	INVOSPEED S15H	INVOSPEED S20
Installed power	32kw	32kw	40kw
Compressed air pressure	6 Bar	6 Bar	6 Bar
Compressed air consumption	15 CFM	17 CFM	20 CFM
Maximum pack height	380mm	380mm	380mm
Average output per min	Upto 12 PPM	Upto 15 PPM	Upto 18PPM
Maximum size of film reel	650 x 400 mm	650 x 400 mm	650 x 400 mm
Working board height	1045 - 1205 mm	1045 - 1205 mm	1045 - 1205 mm
Machine size	8800 x 1550 h = 2600 - 2817	8800 x 1550 h = 2600 - 2817	6715*3355 h = 2600 - 2817
Machine net weight	1700 kg	1700 kg	2000 kg
Advised film: LDPC	50 - 90 micron	50 - 90 micron	50 - 90 micron

\* Subject to maximum film width

\*\* Depending on product and operator



# Shrink Tunnels



Shrink Tunnels are used for shrink wrapping products from medium to high speed output operations. Shrink tunnels come in a variety of sizes and dimensions depending upon product & collation/ bundling and density of Shrink Film.

The heat applied to the shrink film enables the film to adapt to the product within the film. The heat and conveyor speed can be configured as per requirement. Excellent air circulation system within the heat tunnel differentiates us from other suppliers enhancing quality of pack and output of machine.

Shrink tunnels are used in a variety of industries for retail packaging, food packaging, and industrial packaging.

## Features & Benefits:

- Start saving with energy efficient shrink tunnels.
- Japanese design
- Designed for polyolefin shrink films
- High velocity turbo design (strong air flow)
- Variable speed live roller conveyor
- High quality heating element
- Digital temperature control
- Automatic cool down



## Technical Specifications:

MODEL NO	ST-90	ST-120	50 ST 25/35	65 ST 25/35/45	85 ST 25/35/45
Max. product width (mm)	300	350	400 mm	500 mm	700 mm
Max. product height (mm)	175	250	300 mm	400 mm	400 mm
Chamber length (mm)	900	1200	1000/1500 mm	1500/2000 mm	1500/2000 mm
Power (kw)	9	12	12 kw-18 kw	18 kw-24 kw	18 kw-24 kw
Voltage	380V-440V, 3 Phase, 50Hz	380V-440V, 3 Phase, 50Hz	380V-440V, 3 Phase, 50Hz	380V-440V, 3 Phase, 50Hz	380V-440V, 3 Phase, 50Hz
Conveyor type	Live Rollers	Live Rollers	SS wire mesh	Heavy duty mesh	Heavy duty mesh
Film	POF	POF	LDPE	LDPE	LDPE

Note: All L Sealers/Sleeve Wrappers need Shrink Tunnel to complete the process of Shrink Wrapping



# Sealed Air - Polyolefin Shrink Film



## Cryovac Polyolefin (POF) Shrink Films:

Polyolefin Shrink Films are now the most sought Shrink Films in the Packaging Industry. These shrink films offer 80% shrinking properties (both directions) along with better transparency and remains odourless when heated and cooled. POF Shrink Films does not emit Chloride on heating, this is an important advantage over PVC Shrink Films.

Centerfold POF Shrink Films are used for packaging various products. These films can be used across all industries as these films also comply food grade. Shrink Wrapped products using POF Films can be stored between -60°F till 90°F.



POF Shrink Films will have less build up on sealer wires, thereby saving costs on replacement of the sealing wire & routine cleaning

OPTI range of shrink film are multi layered, cross-linked polyolefin shrink film that offers a cost-effective solution for a wide range of products. Cross-linking provides a tougher material that offers you crystal-clear optics, stronger seals, and excellent shrink characteristics.

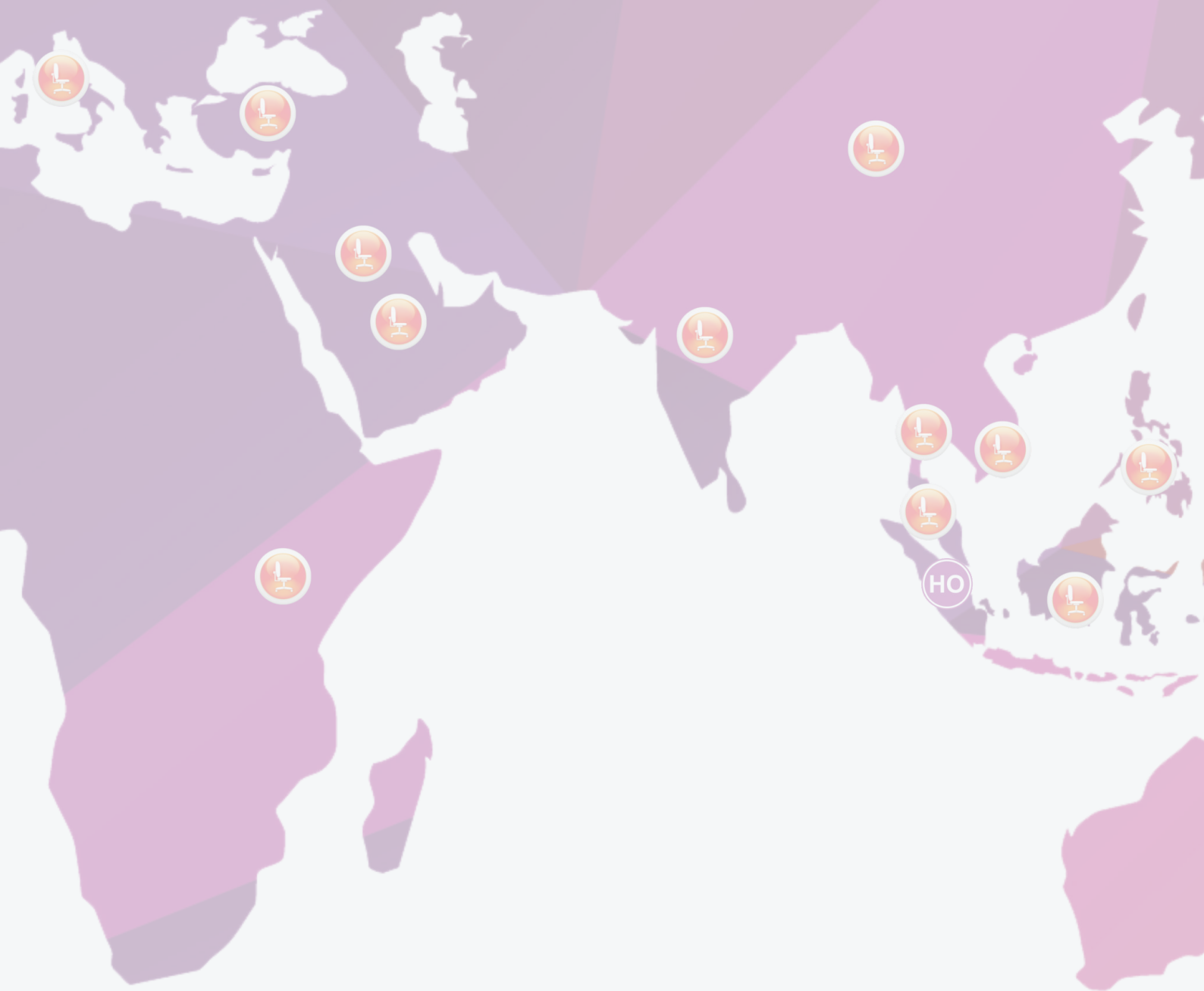
CT-300 series are based on micro-layering technology. This film can demonstrate comparable or even better performance versus significantly thicker materials.

## Technical Specifications:

MODEL	ASTM Test Method	Opti 200 MAX	Opti 200 STD	CT 301	CT 302	Impact 24	Impact 34
Gauge		45	55	30	37	75	100
Length (mm)		1332	1332		2150	1067	799
Minimum use temp		-60°F	-60°F	-60°F	-60°F	-60°F	-60°F
Maximum storage temp		90°F	90°F	90°F	90°F	90°F	90°F
Haze	D1003	3	3.5	3.2	3	3.3	3.7
Gloss	D2457	88	88	86	135	87	87
Coefficient of friction	D1894	0.3	0.3	0.17	.17	0.22	0.23
Water transmission rate	F1249	1.6	2.0	2.2	38	1.1	0.9
Oxygen transmission rate	D3985	10200	9000	7000	16000	6726	4941
Tensile strength	D882	20/20	18000/19000	20.9/21.6	1200/1600	17500/19000	17500/19000
Elongation at break	D882	110/110	110/110	92/93	100/100	110/135	125/140



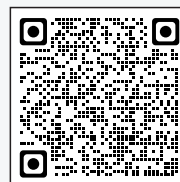




Ours Partners



**PACKMATIC**



Watch Our  
Machines in Action

For more information, please contact:

**CLEARPACK SINGAPORE PTE LTD.**

67 Ubi Road 1 #10-06 Oxley Bizhub,  
Singapore 408730

T: +65 67414077; F: +65 67413286

E-mail: [info@clearpack.com](mailto:info@clearpack.com)

Local contact:

**CLEARPACK AUTOMATION PVT LTD.**

Plot No. 09, 10 & 11, Ecotech -1 Extension,  
Kasna Road, Greater Noida, Uttar Pradesh, 201308

T: 1800-3000-5600

E-mail: [sales@in.clearpack.com](mailto:sales@in.clearpack.com)

[www.clearpack.com](http://www.clearpack.com)

Singapore (HQ)

Indonesia | Philippines | Vietnam | Malaysia | Thailand | India | Bangladesh | China | UAE | Saudi Arabia | Italy | Turkey | Kenya

India Offices

Ahmedabad | Bengaluru | Chandigarh | Chennai | Delhi / NCR | Hyderabad | Kolkata | Mumbai

SPS 09/22